

**FOR ROOFS & WALLS**

**THERMAL PERFORMANCE**

**MEASURED**

- In a dynamic guarded hot box by the Civil Engineering and Building Laboratory, ENTPE/CNRS
- Based on actual energy consumption
- Equivalent to 80 mm of conventional insulation ( $R_{eq.} = 2 \text{ m}^2 \cdot \text{K/W}$ )

**FELT after implementation**

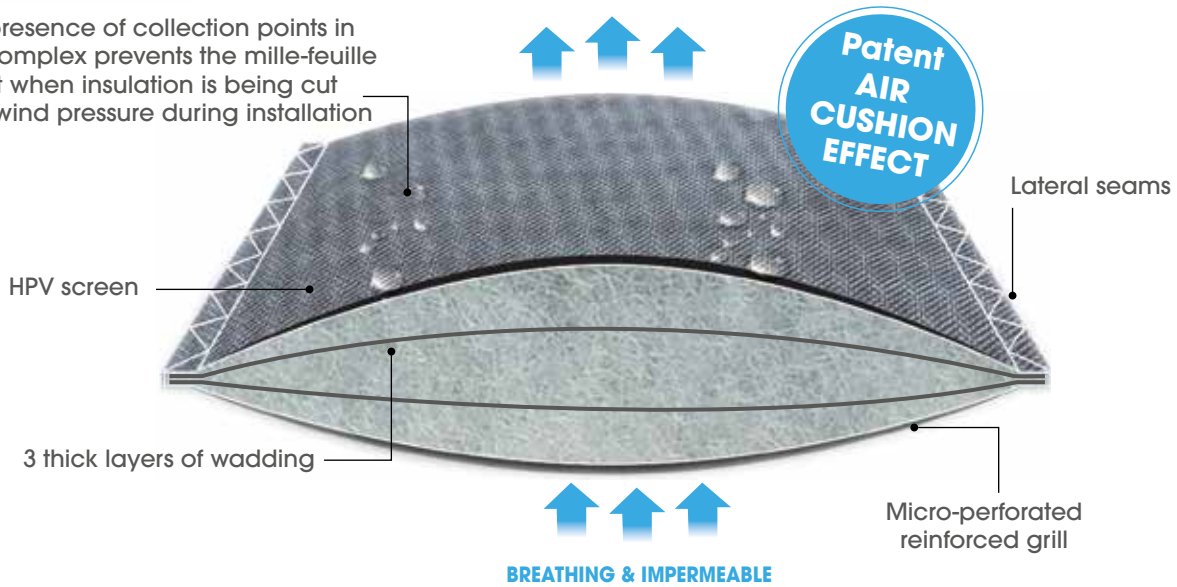
- Limited overheating **in summer** due to the reflection of solar radiation
- Heating energy savings **in winter**
- Draughts were stopped and thermal bridges were avoided



**UNIQUE ADVANTAGES**

- Additional comfort in summer and winter
- Fully breathing and HPV (highly permeable to water vapour), it prevents condensation while at the same time protecting lofts from water, dust, powder snow, etc.
- Can be installed directly on continuous support (batten) or on existing insulation

The presence of collection points in the complex prevents the mille-feuille effect when insulation is being cut and wind pressure during installation



**INNOVATIVE COMPOSITION**

- Light and flexible, it can be adapted to all shapes (angles, curves)
- Hydrophobic and rot-proof
- Totally hypoallergenic, without microparticles or harmful fibres
- It does not attract pests (rodents, birds, insects, etc.)





**TRIO**  
HPV multi-reflective  
insulation

**Additional 100%  
breathing insulation  
with underlayment**

## GENERAL RECOMMENDATIONS FOR INSTALLATION

- Roll out the ATI TRIO insulation parallel to the gutter (with the micro-perforated side inside the room), attaching it using tacks or clips
- For optimal insulation, leave an air gap (minimum of 20 mm) on each side of the insulation
- Use clips of at least 20 mm (galvanised or stainless steel) or wide-headed nails
- Do not install close to heat sources (near a chimney duct, lights, etc.)
- When installing from the outside, respect the ventilation of the area beneath the roof (DTU series 40)
- Attach with ATI FIX PRO adhesive to the right of the covers, rooftop exits, and the joint with the gutter lane

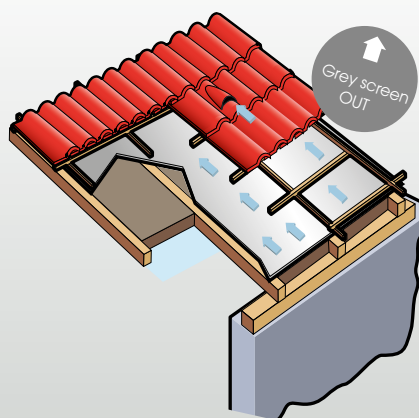
## TECHNICAL CHARACTERISTICS

Thickness	22 mm*	
Area density	450 g/m <sup>2</sup>	
Watertightness	W1	
Permeability of the screen	Sd value = 0.06 m	
Permeability of the complex	Sd value = 0.12 m	
Resistance to nail tearing (nail shank)	R3 - L x T = 350 x 345 N	
Thermal resistance	R eq. to 80 mm of conventional insulation	
Packaging	20 m x 1,50 m = 30 m <sup>2</sup> ± 3 % - 13 kg	

\*Thickness can vary according to the compressions on the roll.

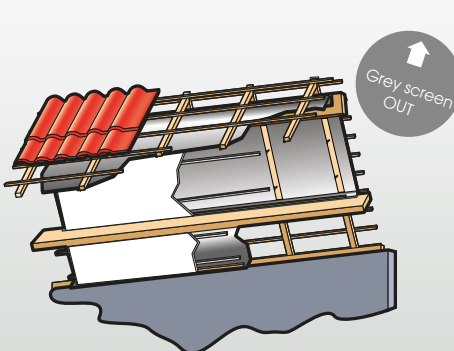


### INSTALLATION ON RAFTERS with thick insulation between rafters



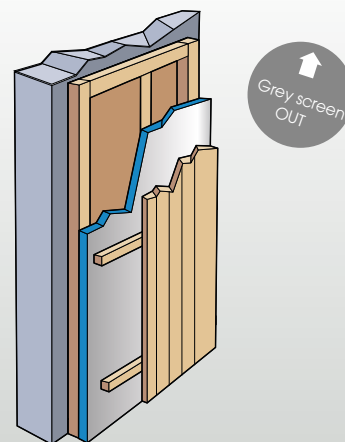
The whole roof is insulated without thermal bridges. The frame remains visible from the inside.

### INSTALLATION UNDER RAFTERS in convertible lofts



Space gain and purlins visible to preserve volume and living space. Effective, even around a skylight.

### INSTALLATION ON EXTERNAL WALLS



A thin, competitive technical solution. It prevents the need to restart the roof. It allows openings to be insulated without changing them (subframes and window sills).



#### ATI ISOLATION

Avenue du Bicentenaire  
01120 DAGNEUX - France  
Tél. : +33 (0)4 78 80 51 89  
Fax : +33 (0)4 78 80 94 39  
info@ati-isol.com - www.ati-isol.com

#### Refer to the technical dossier for installation details.

Available on request or at [www.ati-isol.com](http://www.ati-isol.com)

FP0720 - ATI Isolation reserves the right to amend the composition and conditions of use of its materials without notice as a function of changes in knowledge and techniques. Document, diagrams, and photographs are not contractual. Trademarks and patents pending. SIRET 443 760 681 00041.